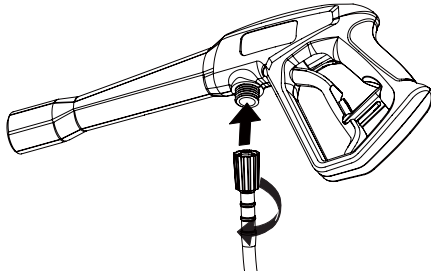
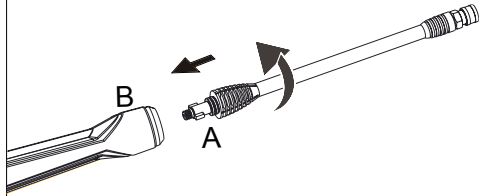


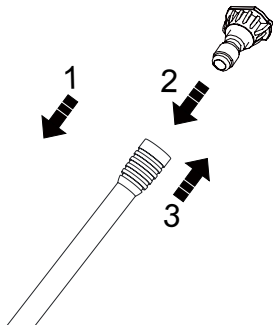
- Connect the high pressure hose to the pressure washer gun assembly by turning the fitting clockwise. Ensure the fitting is fully tightened to the pressure washer gun.



- Insert the male end (A) of the wand into the female bayonet outlet (B) firmly.
- While pushing in the wand firmly, turn clockwise until tabs lock into place to ensure a leak-free connection.



- Pull back the quick-connect collar
- Push the spray tip into place
- Push the collar forward



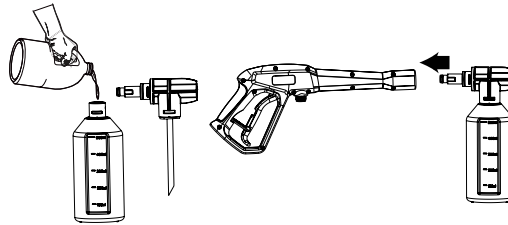
WARNING: This Quick Start Guide is not a substitute for reading the operator's manual. To reduce the risk of injury or death, user must read and understand operator's manual before using this product.



greenworks

1700 PSI / 1.2 GPM ELECTRIC PRESSURE WASHER GPW 1704

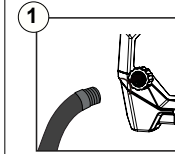
INSTALLING DETERGENT BOTTLE

- Unscrew the bottle from the assembly and fill with pressure washer detergents/soaps only.
- Insert the male end of the bottle into the female outlet on the trigger handle.
- While pushing in the bottle firmly, turn clockwise until tabs lock into place to ensure a leak-free connection.

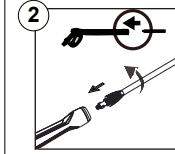


SPRAY TIP	APPLICATION
 40°	White - Wide fan tip (40°) ■ The white 40 degree tip, referred to as the "fan" tip creates the widest area of cleaning with relatively low pressure. This pressure washer tip is best used for light or delicate cleaning applications. It is recommended for light cleaning on wood decks and other soft or delicate surfaces.
 TURBO	Turbo Nozzle Tip ■ This nozzle rotates in a zero to 15 degree circular motion spray pattern to break down tough dirt and grime. The spray pattern can cover area of 4 to 8 inches wide, depending on the distance between the tip and the surface being cleaned.

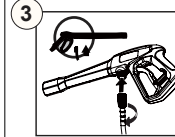
Set-up



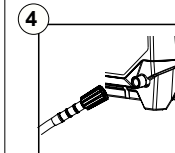
Connect garden hose to pressure washer water intake.



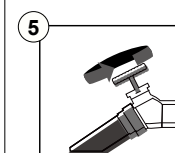
Assemble pressure washer gun to spray wand.



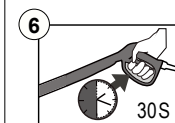
Insert high pressure hose into trigger handle.



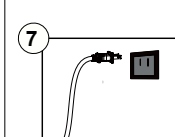
Insert high pressure hose into the pressure washer.



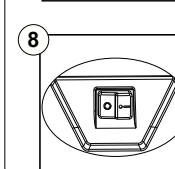
Turn on water at outlet.



Run water hose for 30 seconds with the motor in OFF position. This helps drain air from the tank and lines.



Connect power cord to wall outlet
Extension cord not recommended.



Turn on Pressure Washer
IMPORTANT: Ensure water outlet is On before turning power On to avoid damage to the pump.

Missing parts, accessories or need a service center?



Do Not Return to Store
Call : 1-888-909-6757
www.GreenWorksTools.com

NOTE:

AUTO ON/OFF SWITCH: This Pressure washer is equipped with an Auto Start/Stop feature.
 To operate: Turn the power switch to the On (I) position. Pump will pressurize and shut down immediately.
 Once the trigger of the gun is depressed the unit will turn on. Unit will shut off and be in standby mode when trigger is released.