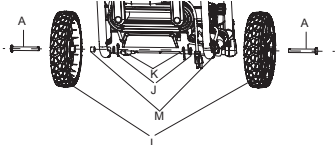


### Installing the wheels

- Insert an axle (A) through a wheel (I), the axle sleeve (M), the frame of the unit and then a washer (J).
- Insert a cotter pin (K) through the hole in the axle to secure. Repeat for second wheel.

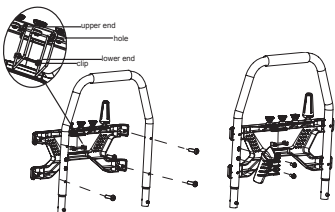


### Installing the front panel and gun holder

- Line up the screw sleeves with the holes in the upper handle and push through.
- Insert the screw and turn clockwise with a Phillips head screwdriver (not included) until the screw is tight.

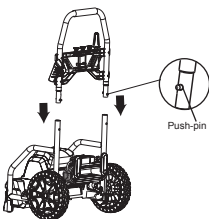
### Assembling the hose hook

- Line up the hose hook upper end with the holes on the back of the front panel
- Insert the hose hook end into the hole and push through.
- Press the hose hook lower end into the clip on the back of the front panel.

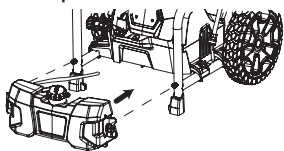


### Installing the upper handle

- Push and hold the push-pin buttons on the sides of the upper handle assembly as you slide the handle onto the frame.



### Attaching the soap tank



**WARNING:** This Quick Start Guide is not a substitute for reading the operator's manual. To reduce the risk of injury or death, user must read and understand operator's manual before using this product.

# GREENWORKS

## ELITE

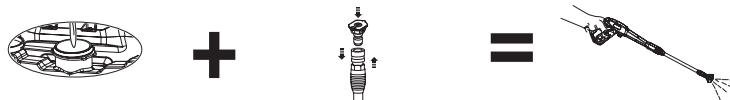
### 2000 PSI / 1.2 GPM

### ELECTRIC PRESSURE WASHER

### EPW2000

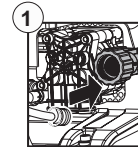
#### USING DETERGENT

- Put pressure washer detergent in detergent tank.
- Install blue or black soap nozzle.
- Squeeze trigger and wait approx. 1 minute for soap.

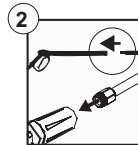


SPRAY TIP	SPRAY TIP APPLICATION
 25°	<b>Green - Narrow fan tip (25°)</b> <ul style="list-style-type: none"> <li>■ The green pressure washer tip provides high versatility with its 25 degree angle tip. Referred to as the washing tip, because it provides adequate pressure to remove dirt from surfaces, but is designed to not damage many surfaces. This pressure washer tip is designed for "sweeping" foliage or debris given its wide angle. This tip is versatile due to its wide area of cleaning and strong pressure application.</li> </ul>
 40°	<b>White - Wide fan tip (40°)</b> <ul style="list-style-type: none"> <li>■ The white 40 degree tip, referred to as the "fan" tip creates the widest area of cleaning with relatively low pressure. This pressure washer tip is best used for light or delicate cleaning applications. It is recommended for light cleaning on wood decks and other soft or delicate surfaces.</li> </ul>
 SOAP	<b>Black - Soap spray tip</b> <ul style="list-style-type: none"> <li>■ The black soap spray tip, is used for soap application. Soap is applied under low pressure high volume for optimum performance. Soap cannot be applied under high pressure with this machine.</li> </ul>
	<b>Turbo Nozzle Tip</b> <ul style="list-style-type: none"> <li>■ The nozzle rotates in a zero to 15 degree spray pattern in a circular motion to break down tough dirt and grime. The spray pattern can cover area of 4 to 8 inches wide, depending on a distance between the tip and the surface being cleaned.</li> </ul>

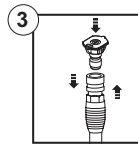
### Set-up



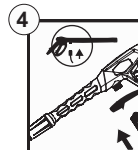
Connect garden hose to pressure washer water intake.



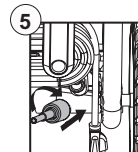
Assemble pressure washer gun to spray wand.



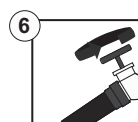
Connect desired pressure tip.



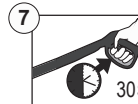
Insert high pressure hose into trigger handle.



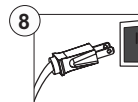
Connect the high pressure hose to the water outlet connector.



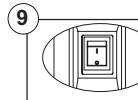
Turn on water at outlet.



Run water hose for 30 seconds with the motor in OFF position. This helps drain air from the hose and pump.



Connect power cord to wall outlet  
Extension cord not recommended.



Turn on Pressure Washer  
**IMPORTANT:** Ensure water outlet is On before turning power On to avoid damage to the pump.

#### NOTE:

**AUTO ON/OFF SWITCH:** This Pressure washer is equipped with an Auto Start/Stop feature.  
To operate: Turn the power switch to the On (I) position. Pump will pressurize and shut down immediately. Once the trigger of the gun is depressed the unit will turn on. Unit will shut off and be in standby mode when trigger is released.

Missing parts, accessories or need a service center?

**Do Not Return to Store**  
Call : 1-888-909-6757  
www.greenworkstools.com

